



4 Sandra Court, Loch Sport

PERCHED RIGHT ON THE RESERVE!!

Set amongst the gums and picturesque Lake Reeve, this idyllic beach home has its own unique charm displaying the original characteristics with its timber floors and windows .. yet with a modern twist featuring a brand new kitchen, laundry and bathroom with all the hard work done for you to enjoy!

With an open plan living room, as new kitchen with bonus of a dishwasher and a view from the kitchen window across the reserve to Lake Reeves. Morning coffee on the front veranda is the perfect way to start your day and all under cover with a pretty outlook through the front garden!

With two spacious bedrooms and a centrally located bathroom this beach side residence provides wood heating for the colder winter months and reverse cycle air-conditioning for those warm summer days. Heading out the back you will find the perfect outdoor entertaining with veranda under cover and space to sit around the fire pit for those cosy evenings with friends and a beautiful native garden to sit and watch the wildlife for hours on end!

The best is yet to come as there is also a fully refurbished spacious bungalow. Ideal for visitors complete with a small kitchenette and living area, reverse cycle air-conditioning, double glazed windows, full insulation including walls floor and ceiling. Plenty of privacy yet easily accessible at the rear of the property with the reserve running alongside the fence line. The double lockup garage completes the picture on this sizeable 944 square metre block that's fully fenced with beautifully maintained landscape gardens.

Unwind at this idyllic beach side private residence with 90 Mile Beach a mere 15 minute walk and set amongst a natural environment you really cannot go wrong with the location!! Family, couple, investor or holiday home this is an opportunity you cannot afford to miss!

3 1 2

Land Area 944 sqm

\$239,500

ID# 658

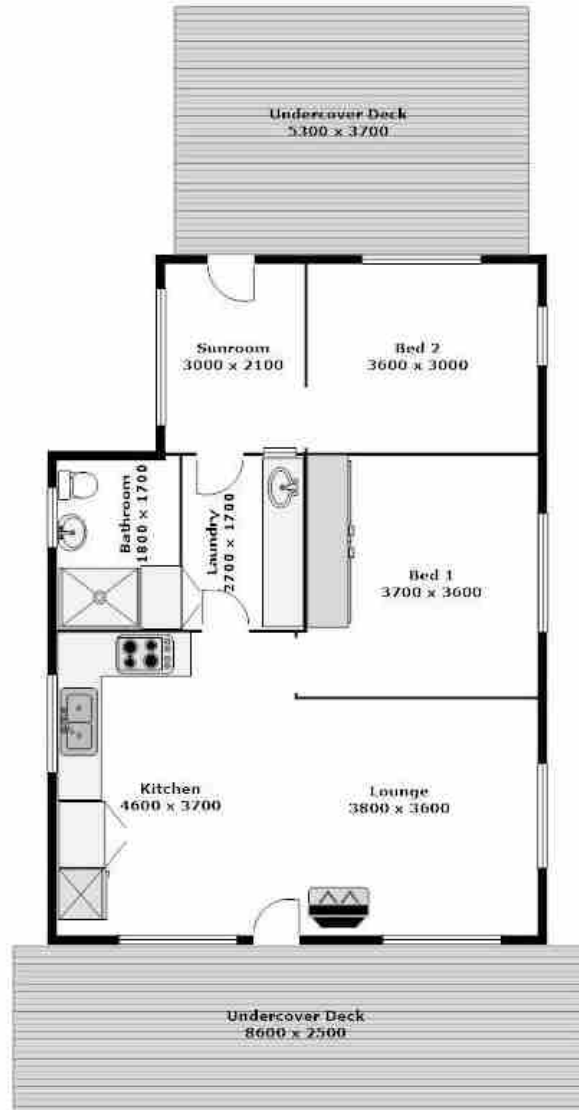
Open for Inspection
By Appointment



Rachelle Potts
(03) 5146 0946
0407 460 936

Bungalow
6100 x 3700

Garage
7300 x 5400



**PLEASE NOTE THAT ALL MEASUREMENTS ARE APPROXIMATE & NOT TO EXACT SCALE