



9 Bream Road, Loch Sport

CORNER BLOCK ONLY A STONES THROW FROM THE WATER EDGE!

A neat and tidy three bedroom home that has been loved by the same family since the day it was built!

The first thing that comes to mind on entering the home is how bright and spacious the living area is! This zone of the home offers two separate spaces with a large lounge room equipped with wood heating and reverse cycle air conditioning, adjacent to the lounge is a separate area for the dining table! The kitchen is ample in size with plenty of bench and cupboard space and looks over the backyard, allowing you to keep an eye on the kids outside in the fenced backyard whilst preparing dinner! Easy access out onto the rear deck through the laundry just off the kitchen.

The bathroom has dual access of the main bedroom allowing for a semi en suite with the added bonus of a second toilet located off the laundry. Two of the bedrooms are big in size with built in robes with enough space within the third bedroom to add more storage within!

Both the front and rear deck are undercover and perfect spots for any type of weather! The back deck is the perfect entertaining space for morning or night and not far past this is the single garage which allows these two spaces to be used in conjunction! There is also a fully enclosed lean to off the garage which is the perfect spot for the boat or caravan!!

Lake Victoria is only a hop, skip and a jump from the property with Bream Road leading directly into a walk way reserve down to the lake only a few of hundred metres from your door step!

So as you can see everything that you need for a spacious home is available here! So why not give the agent a call today to book an inspection!

3  1  2 

 Land Area 710 sqm

\$229,000

ID# 692

Open for Inspection

By Appointment

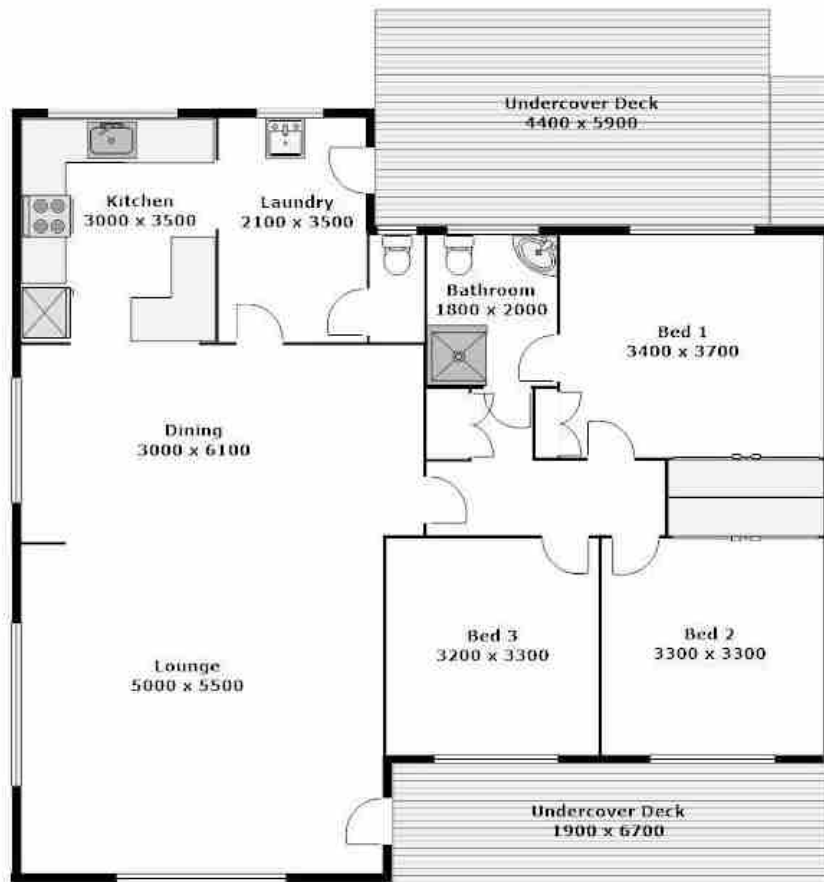


Renee Potts
(03) 5146 0946
0412 673 126



Carport
3600 x 5300

Garage
3500 x 7000



**PLEASE NOTE THAT ALL MEASUREMENTS ARE APPROXIMATE & NOT TO EXACT SCALE