



## 11 Sanctuary Road, Loch Sport

### ONLY THREE STREETS BACK FROM THE WATER EDGE AND WITHIN WALKING DISTANCE TO THE HEART OF TOWN!!

Everyone wants the perfect location and here you will find it! Smack bang in the heart of town with the water, shops, Marina and RSL all so close to here that you can walk!!

Easy access to the water edge as well with the walk way reserve leading through only three house blocks away.

Set back on the block this home is as neat as a pin with open plan living with new kitchen. The great thing here is this home has floor boards hidden away underneath the floor coverings!

The master bedroom has built in wardrobes stretching along one wall and is directly opposite the bathroom which is also central to the second bedroom.

A great thing here for the holiday buyer is that the home comes furnished as well!

Heading outside is a very low maintenance front and rear yard with tall spacious carport which extends directly onto the both the front and rear veranda for under cover protection on the rainy days. Both front and rear veranda are spacious for entertaining.

The single garage at the rear of the block has both concrete floor and power connected and will fit all the beach toys or boat.

Being so neat and tidy and ready for you to move in, you will need to come quick to inspect as this one will sell very quickly!!

- x
- x
- x
- x
- x
- x

CShell Real Estate does not warrant, guarantee or make any representations regarding the currency, accuracy, correctness, reliability, usability or any other aspect, of the material presented on the CShell Real

2 1 3

Land Area 606 sqm

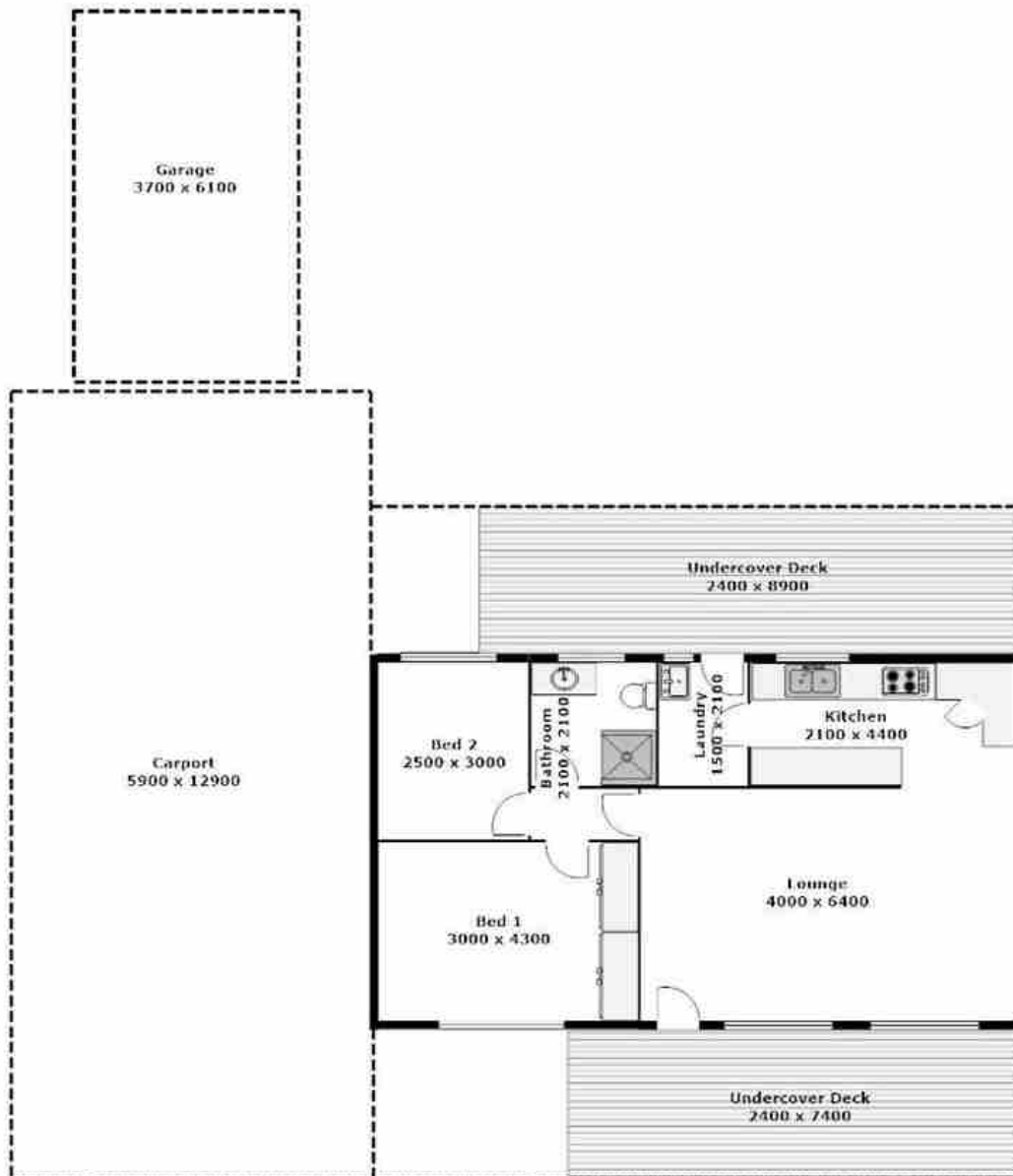
**\$199,000**

ID# 694

Open for Inspection  
By Appointment



Rachelle Potts  
(03) 5146 0946  
0407 460 936



\*\*PLEASE NOTE THAT ALL MEASUREMENTS ARE APPROXIMATE & NOT TO EXACT SCALE