



25 Caldwell Street, Loch Sport

BIG HOUSE WITH PERFECT LOCATION TO WATER AND SHOPS!

Looking for permanent living? Well you need to take a stroll through this beach home! There is something here to accommodate for the whole family!

On entering the home you are greeted with open plan living, huge kitchen with almost new appliances and plenty of space for the dining area and lounge. This area is also home to the laundry and the second toilet of the home. Heading up the external stairs there is ample cupboard space on the second storey landing with a large linen press accompanying this area. The main bathroom has been revamped with new vanity, toilet and shower already installed! With four bedrooms in total, the three bedrooms at the front of the home are all decent in size with built in cupboards in all. The north facing master bedroom is enormous in size and is currently home to a study nook and walk in robe which could easily be converted into an en-suite still with plenty of space left in the bedroom area! The top storey is also home to a second undercover outdoor area which flows off the main bedroom and with a bit of TLC, this whole space could be the perfect parents retreat!

Coming back down the stairs and flowing out the back door off the lounge room is another large undercover space, perfect for entertaining and catching the afternoon sun! The yard is fully fenced with gates closing off the rear of the home to keep the family pets secure and two large double garages also occupy the backyard with plenty of storage space for the cars and the boat!!

Location of the home for permanent living is fantastic! With the Primary School almost directly at the end of the street, Lake Victoria within a couple of minutes walk and both the General Store, Supermarket and Cafes all within walking distance!!

With the bathroom, kitchen and laundry already having their makeover, the hard tasks of this home have already been done for you! All you have to do is move in and add your own touches to this spacious two storey home!!

****Please note that 24 hours notice needs to be given for inspections due to tenants occupying residents. The property is currently leased until March 2019.**

*
*
*
*
*
*
*

4 1 4

Land Area 647 sqm

\$239,000

ID# 725

Open for Inspection
By Appointment



Rachelle Potts
(03) 5146 0946
0407 460 936



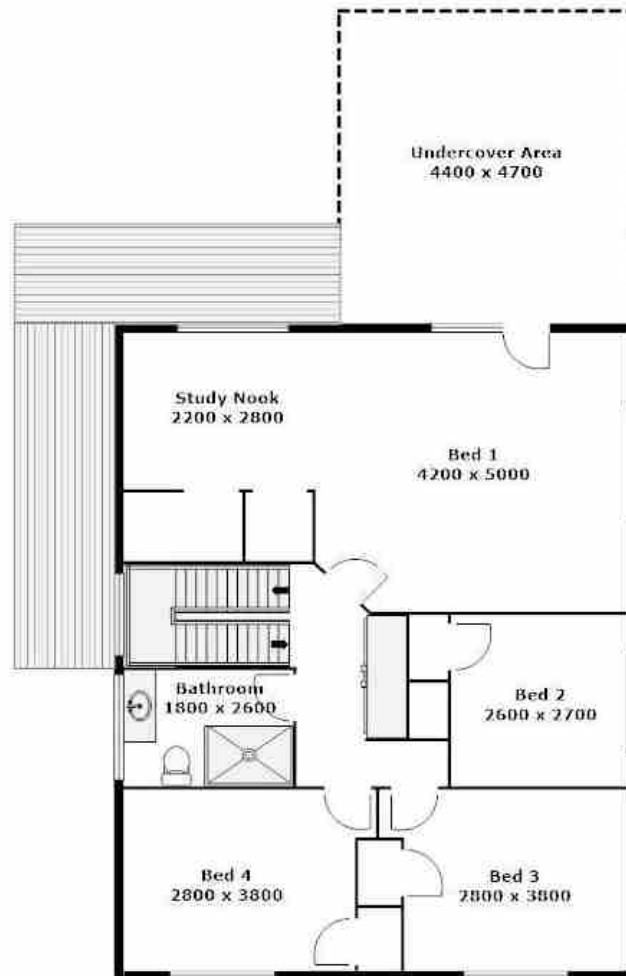
Garage
5500 x 6500

Storage Shed
2500 x 4500

Garage
6000 x 6800



**PLEASE NOTE THAT ALL MEASUREMENTS ARE APPROXIMATE & NOT TO EXACT SCALE



**PLEASE NOTE THAT ALL MEASUREMENTS ARE APPROXIMATE & NOT TO EXACT SCALE