



19 White Crescent, Loch Sport

SUMMER HOLIDAYS WILL BE FUN HERE!!

Here's the opportunity to get into the market at this affordable price and enjoy family holidays in this beach home!

Great location here within walking distance to the water edge, only a short drive from the Surf Beach for fishing and walking distance to the Bakery!

This elevated home offers double carport underneath the home and is also set amongst a bush setting with fully fenced yard on a large block.

External stairs lead up onto the veranda and straight into the open plan living with wood heating and floating timber floors which are perfect for the beach environment! Kitchen offers ample bench and cupboard space with gas cooking. Big windows throughout the living space look out over the bush setting yard.

The home is split level with a few steps down into the hallway where you will find separate laundry, toilet and bathroom with the bonus of a bath! Three good size bedrooms, two with built in robes completes the home off inside!

Heading back out side the kids will love the back yard which has the added bonus of an outdoor fire pit. The underneath carport can also be used for parking or even entertaining for the evening barbecue. There is also solar electricity with a 1.5 KW inverter and large water tank for plenty of water storage!

The current vendor has the property set up as a holiday rental giving you the opportunity to do the same.

Why not come and inspect what is being offered here!

- *
- *
- *
- *
- *
- *
- *

CShell Real Estate does not warrant, guarantee or make any representations regarding the currency, accuracy, correctness, reliability, usability or any other aspect, of the material presented on the CShell Real Estate Website and it is recommended that prospective purchasers and users of the website make their own

3  1  2 

 Land Area 877 sqm

\$235,000

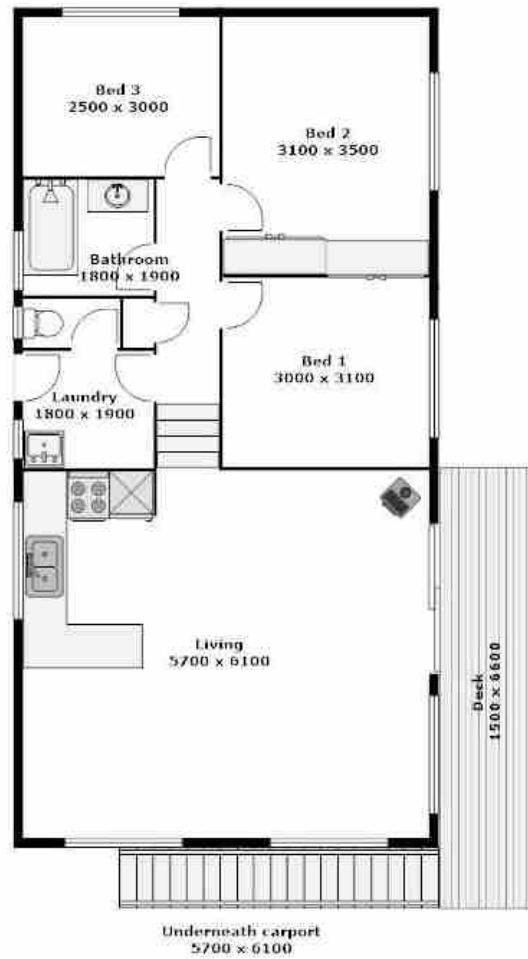
ID# 776

Open for Inspection

By Appointment



Rachelle Potts
(03) 5146 0946
0407 460 936



**PLEASE NOTE THAT ALL MEASUREMENTS ARE APPROXIMATE & NOT TO EXACT SCALE