



## 1 David Court, Loch Sport

### BRAND NEW TWO STOREY HOME IN QUIET COURT LOCATION!

Want that brand new home feeling without the stress of building? Well all the hard work has been done for you here, ready for you to move in and start enjoying as your next holiday home or for those seeking that permanent sea change.

A three bedroom double storey home that has plenty of room for the whole family to spread out. The lower level is home to open plan living containing modern kitchen with electric appliances and ample cupboard space, the dining and lounge is also within this space with plenty of room to reconfigure to your liking. One of the two bathrooms is also located on this level and a European laundry that is hidden under the stairway.

Leading up the internal timber stairs takes you into the second living space which is central to the three bedrooms and second bathroom of the home. Heading out the large sliding doors off the lounge is a large tiled undercover patio area, the perfect spot to sit and enjoy an afternoon beverage whilst taking in the cool sea breezes. The property is also being sold fully furnished meaning you can move straight in and start enjoying this slice of paradise!!

Both the upper and lower levels are heated and cooled by reverse cycle and with the added bonus of double glazed windows this property will stay well heated in the winter and lovely and cool in the summer!

The yard is a blank canvas with scattered trees throughout and gravel driveway but with a bigger than normal sized block there is plenty of room for a garage and yard for the kids to run around in! Lake Victoria is within a short walk from your doorstep being located only three streets back from the waters edge and for all the bush lovers, the National Park is also a stones throw from the property for all your adventure needs.

\*  
\*  
\*  
\*  
\*  
\*  
\*

CSHELL Real Estate does not warrant, guarantee or make any representations regarding the currency, accuracy, correctness, reliability, usability or any other aspect, of the material presented on the CSHELL Real Estate Website and it is recommended that prospective purchasers and users of the website make their enquiries and seek independent legal advice in relation to the subject property.

3  2 

 Land Area 617 sqm

**\$329,000**

ID# 789

**Open for Inspection**

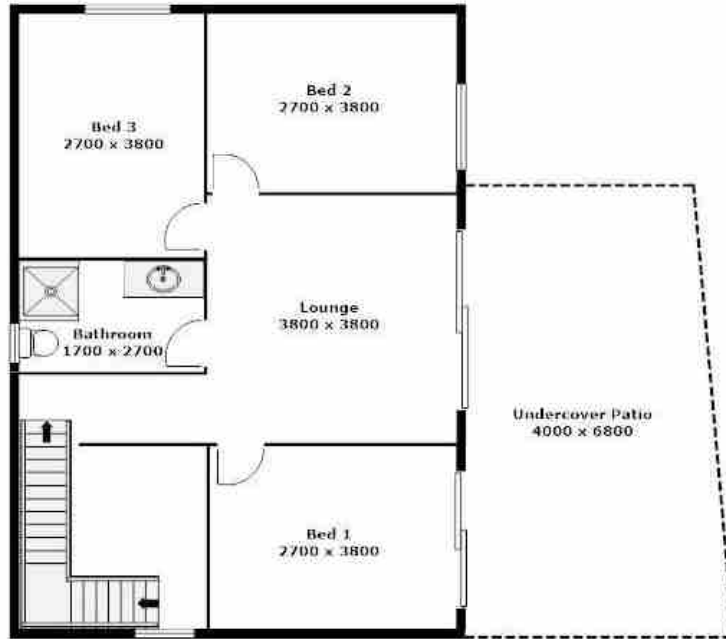
By Appointment



Renee Potts  
(03) 5146 0946  
0412 673 126



\*\*PLEASE NOTE THAT ALL MEASUREMENTS ARE APPROXIMATE & NOT TO EXACT SCALE



\*\*PLEASE NOTE THAT ALL MEASUREMENTS ARE APPROXIMATE & NOT TO EXACT SCALE