



13 Bernadette Avenue, Loch Sport

3  1 

UNIQUE PROPERTY WITH PLENTY OF CHARM!!

A property with character and charm is what you will find here with this California bungalow styled home tucked away in a quiet street and only a short walk to the water edge!

This relocated furnished home has been freshly painted on the inside with new floating floorboards to the living and new carpet to the bedrooms.

Entering through the double doors at the front of the home you are greeted by long spacious hallway that leads through to three good size bedrooms which are central to the main bathroom. The tall ceilings flowing throughout the entire home are something of pure character which give off a huge spacious feel! The lounge and kitchen are separated via a doorway that joins the two areas and could easily be opened up to make the two spaces more freer flowing and open plan. The kitchen is original but in great order and a huge space to work with! There is also a separate dining area at the rear of the home and the laundry tucked off this is the perfect space for a second bathroom with an already existing toilet, all you need to add is a shower!

The rear deck is the perfect spot to sit and enjoy two types of areas with sunning deck for your morning cup of coffee or the night time BBQ on a warm balmy night under the covered area! The exterior of the home is weatherboard and would look great with a fresh lick of paint against the Colourbond roof that was replaced when the home was relocated!! The yard is low maintenance with the gardens made up mostly of natives. With sufficient water storage at the rear of the home and solar electricity on the roof makes this nice and affordable for the buyer!! The caravan in the enclosed back yard has been converted into extra storage space as well.

All of this within a stone's throw of the water edge along with the boat ramp in the street in front! The National Park is also not far from the back door for all the bush lovers! This is a location that will impress most buyers!

*
*
*
*
*
*
*

CShell Real Estate does not warrant, guarantee or make any representations regarding the currency, accuracy, correctness, reliability, usability or any other aspect, of the material presented on the CShell Real Estate Website and it is recommended that prospective purchasers and users of the website make their own enquiries and seek independent legal advice in relation to the subject property.

 Land Area 557 sqm

\$249,000

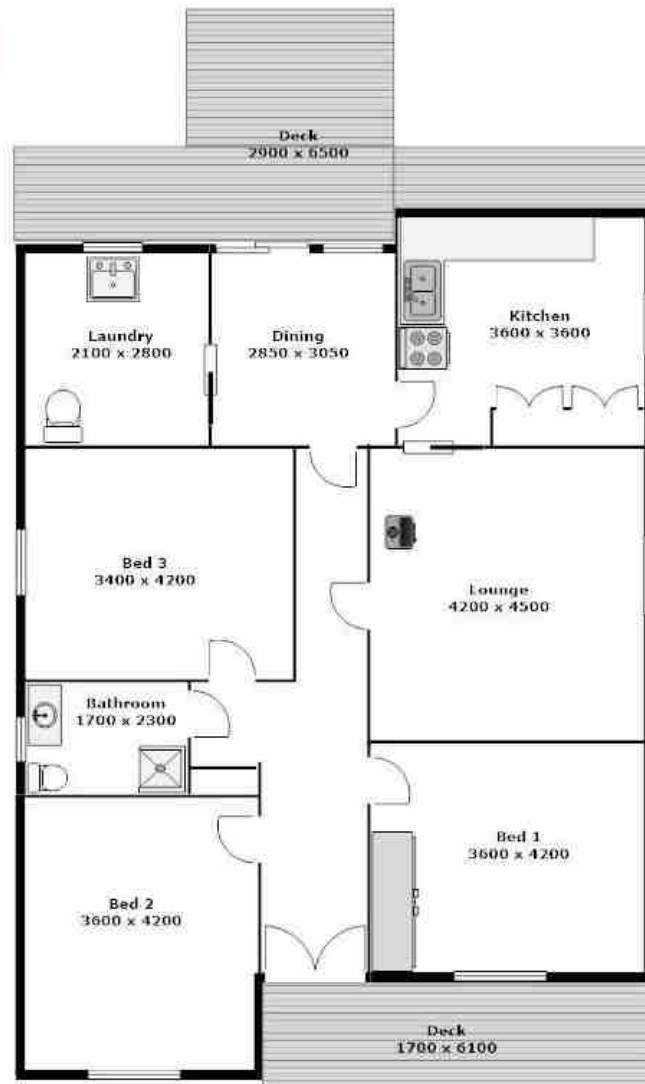
ID# 817

Open for Inspection

By Appointment



Renee Potts
(03) 5146 0946
0412 673 126



**PLEASE NOTE THAT ALL MEASUREMENTS ARE APPROXIMATE & NOT TO EXACT SCALE